

⚡ 100 w.

Ref: JACKSON100LT

The Jackson LT 100W

Luminaire for indoor intensive cultivation.

🇪🇸 Made in Spain

Years Warranty **3**

⚡ General features

Type of connection	Phase, Neutral and Ground
Lifespan	60.000 h
LED model	SMD Samsung
Driver model	Turefull 150W IP67
Index protection	IP20
IEC protection	Class I
Impact resistance	IK01
Heatsink material	Aluminium
Protection by SELV	Yes, extra low voltage

⚡ Light features

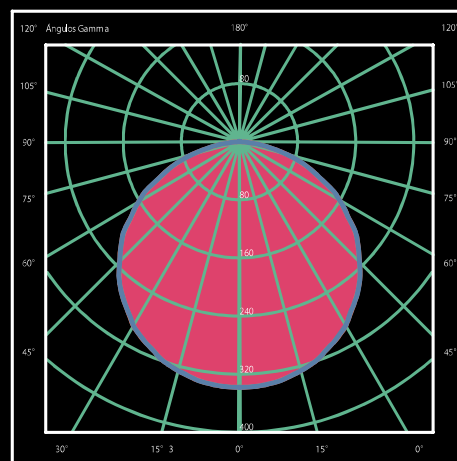
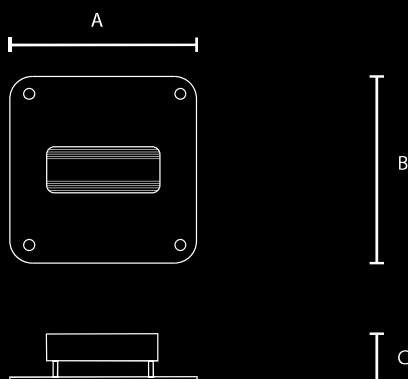
Color temperature	Full Spectrum
Beam Angle	120°
Micromoles	215,184 micromol/sec
PAR micromol	200,232 micromol/sec
CRI	>95
Efficiency	2,43 micromol/joule

⚡ Electric features

Power	102W
Tolerance of power	10%
Voltage	100-240V AC
Input current	0,46A
Power factor	>0,95
Frecuency	50/60 Hz
Voltage of PCB	<60V SELV
Equivalent power	200W HPS
Switching time	<0.1 sec
Dimming and control	Potenciometer
Max. lights/circuit breaker C10	8
Max. lights/circuit breaker C16	12

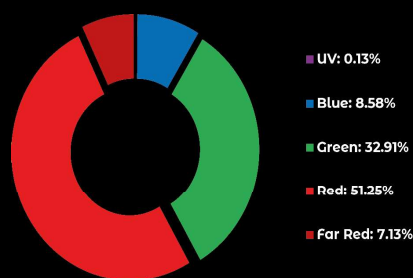
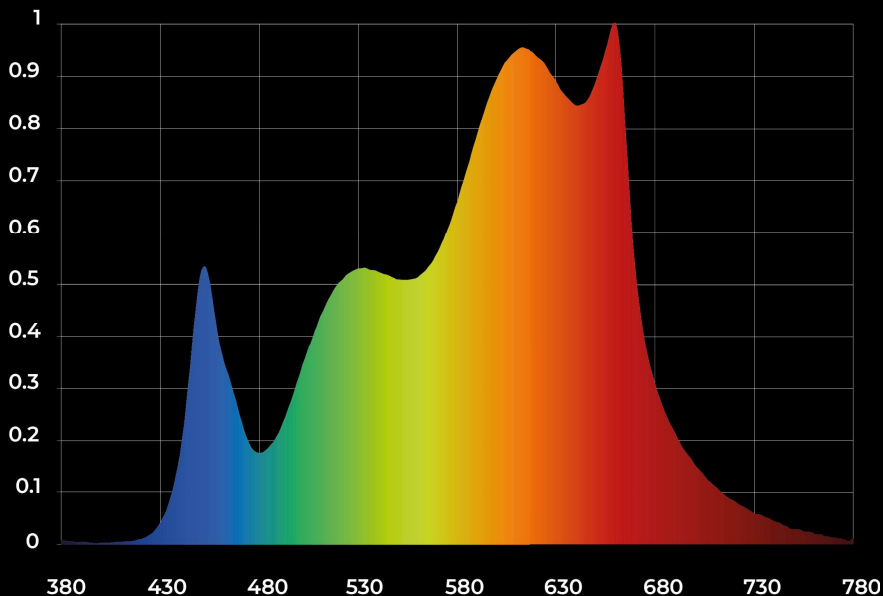
⚡ Size

Size A	280 mm
Size B	280 mm
Size C	80 mm





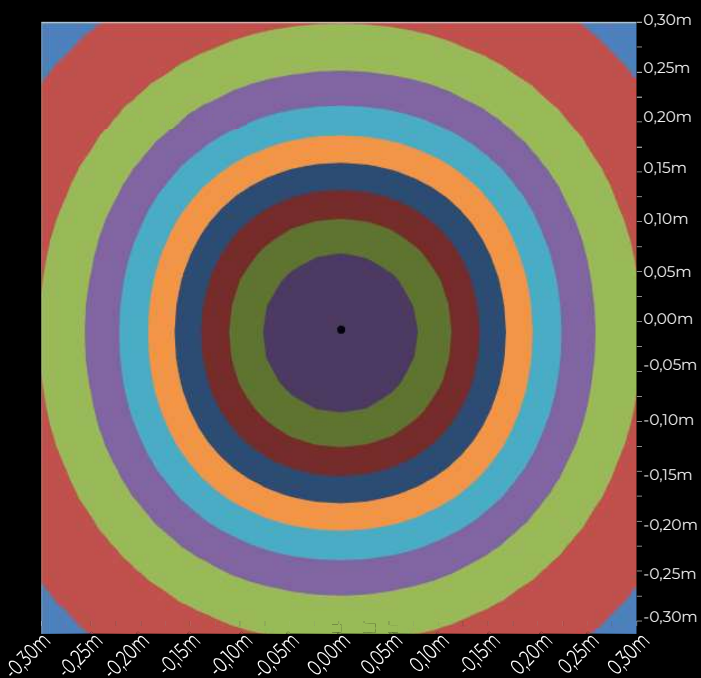
Wavelength



Datos sujetos a cambios April, 2023

PPFD Distribution

0,6x0,6m
20cm Height
1 luminaire



392,794 uMol/(s m²)
average PPFD of Array